

FLEX 100H ES HRV

Item Number: 463333
Variant: 120V 1~ 60Hz



- Airflow up to 104 cfm @ 0.4" PS serves 3 to 4 bedroom homes
- Top-mounted ports for easier duct connectivity
- Unobstructed front access
- The TurboTouch feature delivers up to 50% more exhaust capacity
- Aluminum core provides superior heat transfer capability
- Integrated airflow measurement system allows for rapid and accurate reading of airflow during installation

Application

As Fantech's masterpiece of versatility, features and efficiency, the Flex® 100H ES is ideal for high-rise apartment applications, condominiums, single and multi family homes. With its compact top port design featuring 5 inch oval collars and the included EZ-Mount wall bracket, the Flex 100H ES can be installed in spaces as small as 24 inches, such as a closet or maintenance room.

How it works

Unlike traditional HRVs that require excessive power to meet supplemental ventilation needs, the compact, yet powerful Flex 100H ES allows for sizing based entirely on principal ventilation requirements. With its exclusive TurboTouch feature, the Flex 100H ES can deliver up to 50% more exhaust capacity to easily meet supplemental ventilation needs whenever additional airflow is required.



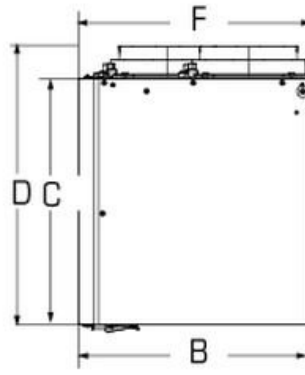
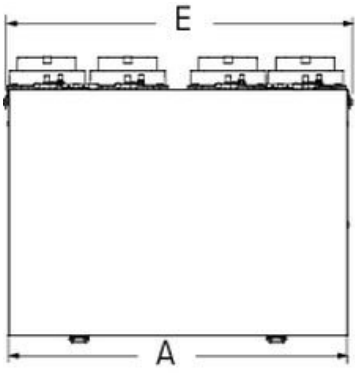
Technical parameters

Product	
Voltage (nominal)	120 V
Frequency	60 Hz
Phase(s)	1~
Input power	168 W
Input current	1.4 A
Air flow	max 49 L/s
Static pressure	100 Pa
Certificate	CSA, HVI, ENERGY STAR®
Dimensions and weights	
Weight	39.2 lb
Used for	
Installation placement	Vertical

Performances

Heating	Supply temperature	Net airflow	Consumed power	Sensible recovery efficiency	Apparent sensible effectiveness	Latent recovery/ moisture transfer
	°F (°C)	cfm (L/s)	W	%	%	-
	32 (0)	64 (30)	50	65	69	0.02
	32 (0)	81 (38)	65	63	68	-0.01
	32 (0)	102 (48)	100	60	66	0.00
	-12 (-25)	66 (31)	65	62	65	0.04

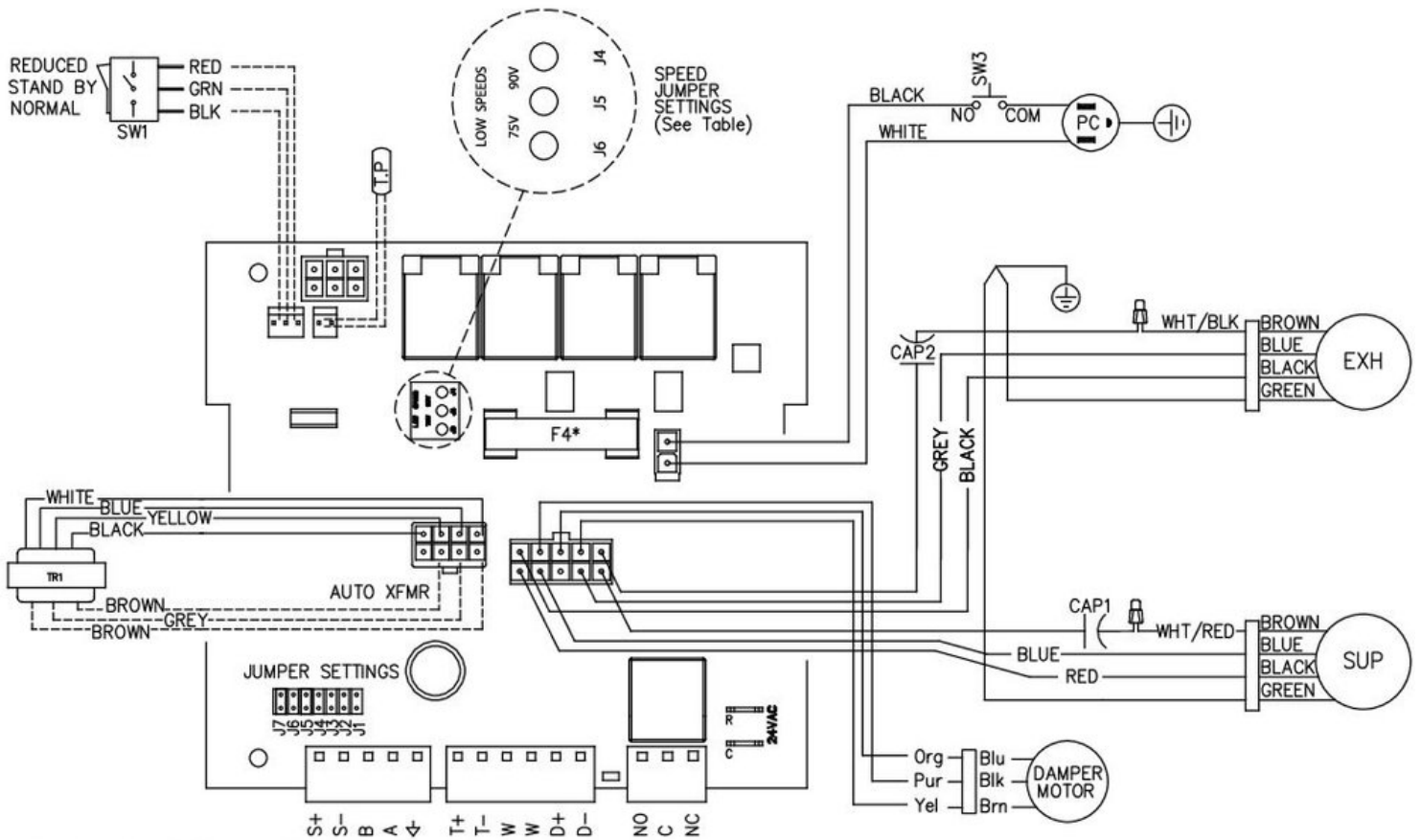
Dimensions



A	B	C	D	E	F
21 1/2 (546)	14 1/2 (368)	15 5/8 (397)	17 7/8 (454)	22 1/2 (572)	15 (381)

Dimensions in inches (mm).

Wiring



*F4 is 3A Fast Acting with I2T > 20
 ----- Low voltage factory wiring
 _____ Line voltage factory wiring

Model	JUMPER SETTINGS							Low Speed Jumper Settings	
	J7	J6	J5	J4	J3	J2	J1		
Flex100H	ON	ON	OFF	OFF	OFF	OFF	OFF	JP4	75V
VHR100R	ON	OFF	OFF	OFF	OFF	OFF	OFF		
VER100	OFF	OFF	OFF	ON	ON	OFF	OFF	JP4	90V

Accessories

- COM5P Supply and Exhaust Hoods (40223)
- ECO-TOUCH Pgrm Wall Ctrl (44929)
- MGE5 Metal Exhaust Grill (411370)
- MGS5 Metal Supply Grill (411369)

Documents

- 428472 FLEX 100H ES SPEC SHEET EN .PDF
- 428463 Flex 100H ES - VHR 100R ES IOM EN FR.pdf
- FLEX100H ES 463333 SERVICE MANUAL.PDF

Specification

Fans

Two (2) factory-balanced fans with backward curved blades. Motors come with permanently lubricated, sealed ball-bearings to guarantee long life and maintenance-free operation.

Heat Recovery Core

Aluminum heat recovery core covered by a limited lifetime warranty. Core dimensions are 8.5" x 8.5" (216 x 216 mm) with a 12" (305 mm) depth. Our heat exchangers are designed and manufactured to withstand extreme temperature variations.

Defrost

The unit incorporates a unique and quiet internal recirculation defrost that does not depressurize the home during the defrost cycle. A preset defrost sequence is activated when the outdoor temperature falls below 23° F (-5° C) and automatically adjusts itself based on operating conditions. The fan speed is also adjusted automatically to provide a smooth and quiet transition between Ventilation & Defrost mode.

Serviceability

Core, filters, fans and electronic panel can be accessed easily from the access panel. Core conveniently slides out with only 14" (356 mm) clearance.

Duct Connections

5" (125mm) Oval plastic duct connections with integrated balancing damper and airflow measurement ports.

Case

24 gauge galvanized pre-painted steel corrosion resistant.

Insulation

Cabinet is fully insulated with 1" (25 mm) high density expanded polystyrene.

Filters

Two (2) washable electrostatic panel type air filters 8.5" (216mm) x 12.5" (318 mm) x 0.125" (3mm).

Drain

1/2" (13mm) OD (outside diameter) drain spout provided, entire bottom of unit covered by drain pan.

Warranty

Limited lifetime on aluminum core, 7 year on motors, and 5 year on parts.

Requirements and standards

- Complies with the UL 1812 requirements regulating the construction and installation of Heat Recovery Ventilators
- Complies with the CSA C22.2 no. 113 Standard applicable to ventilators
- Complies with the CSA F326 requirements regulating the installation of Heat Recovery Ventilators
- Technical data was obtained from published results of test relating to CSA C439 Standards
- HVI certified and ENERGY STAR® qualified*

* This product earned the ENERGY STAR® by meeting strict efficiency guidelines set by Natural Resources Canada and the US EPA. It meets ENERGY STAR® requirements only when used in Canada.